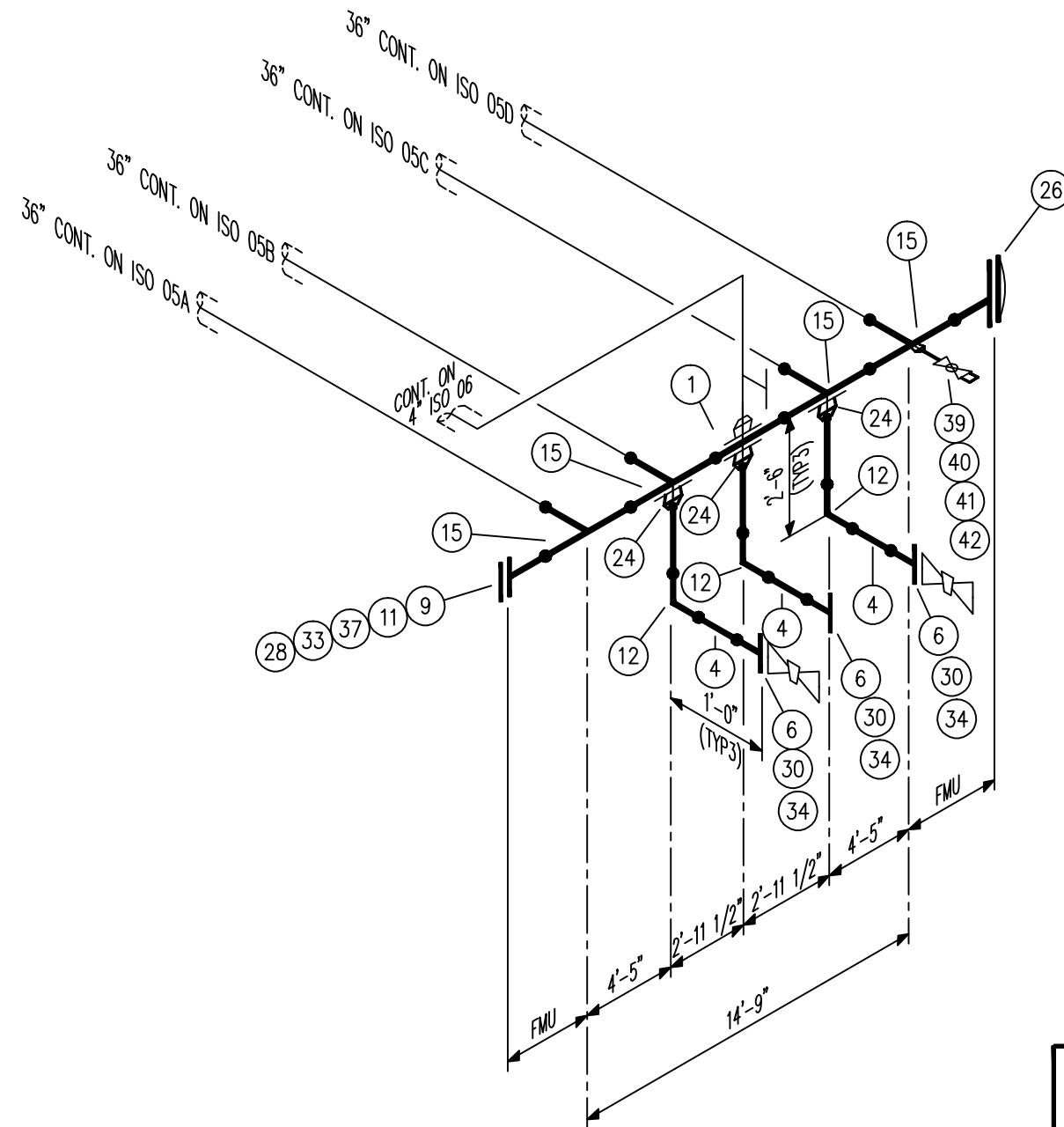


We offer fast and reliable in house Structural Steel and Piping drawings

CAD DRAWING. NO MANUAL CHANGES ALLOWED. DO NOT GUESS. IF IN DOUBT. ASK.



BILL OF MATERIAL

NO	QUAN.	UNIT	S <sub>F</sub>	DESCRIPTION
1	2'	LF	S	36"-PIPE 1.500" THK. GR. 5L X-56 BE
4	7'	LF	S	2"-PIPE SCH 160 (.344" THK.) A106 Gr B BE
12	3	EA	S	2" 90D ELL LR BW , SCH 160 (.344" THK.) A106 Gr B BE
15	4	EA	S	36" TEE BW, 1.500" THK. GR. 5L Y-56 BE
6	3	EA	S	2" -1500# WN.FLG. RTJ by BE SCH 160 (.344" ) A106 GR-B
26	1	EA	S	36" -900# END CLOSURE 1.500" THK. 5L X-56 BE
9	1	EA	S	36" -900# RTJ BY BE WN FLG. 1.500" THK. 5L X-56
11	1	EA	S	36" -900# RTJ BLIND FLG. 5L X-60
24	3	EA	S	2" on 36" WELDOLET .SCH 160 (0.344") THK. A106 GR-B BE
39	1	EA	S	1"x 36" TREADOLET SCH. 160 A105
40	1	EA	S	1"x3" -LG. PIPE NIPPLE TBE ,SCH. 160 C.S A106 GR. B
41	1	EA	S	1" 3000# BALL VALVE THR'D 1"NPT.
42	1	EA	S	1" PLUG SCRD. HEX HEAD 5L X-60
37	20	EA	S	B7 STUD W/2 NUTS EA. 3 1/2"x24 1/4" MOLY COAT
33	1	EA	S	900# RTJ RING GASKET 36"-R-105
28	1	EA	S	36" 900# DAVT. ASSY.
30	3	EA	S	1500# RTJ RING GASKET 2"-R-24
34	24	EA	S	B7 STUD W/2 NUTS EA. 7/8"x6" MOLY COAT

CITY OF HOUSTON FABRICATORS # 611		PRECISION WELDING + FABRICATION R		281-252-0151
<small>THIS DRAWING AND THE INFORMATION HEREIN CONTAINED ARE THE PROPERTY OF PRECISION WELDING AND/OR SUBSIDIARIES THEREOF WHICH HAS BEEN FURNISHED IN CONFIDENCE UPON THE UNDERSTANDING AND CONDITION THAT ALL PERSONS, FIRM OR CORPORATIONS RECEIVING SUCH DRAWING AND INFORMATION SHALL BY THE ACT OF RECEIVING THEM BE DEEMED TO HAVE AGREED, TO MAKE NO COPY, DUPLICATION, DISCLOSURE OR USE WHATSOEVER OF ALL OR ANY PART THEREOF EXCEPT AS EXPRESSLY AUTHORIZED IN WRITING BY PRECISION WELDING &amp; FABRICATION; NOT TO GIVE OR OTHERWISE DISPOSE OF THIS DRAWING; AND TO RETURN THIS DRAWING PROMPTLY UPON REQUEST.</small>		CUSTOMER		
		FOR PROJECT		
0	ISSUE FOR FABRICATION		6-08-04	
B	FOR APPROVAL		6-07-04	
A	FOR APPROVAL		5-27-04	
No.	REVISIONS	APP.	DATE	
			DRW. SAH CHK. DES DATE 05-27-04	JOB No. A3102 REV. 0
			APP.	DWG. No. 03